

# BFLOrienteer

Volume 23, Issue 3

December 2002

## But Wait! There's More!

*Orienteering season not over yet.*

On page two of this newsletter you will find a meet announcement for the first THOMASS meet of the season. THOMASS is a series of events held in Ontario and this meet is just across the border not far from the Lewiston-Queenston Bridge.

Last year Greg Hyatt, Mike Lance and I went to a similar event and had a blast.

If you have any interest in car-pooling call me at 837-3737 and I'll coordinate arrangements.

**Dave Cady**

## It's not too early to renew!

Why not give the club an early Christmas present by mailing your 2003 membership renewal today. It will save the club the expense of mailing you a renewal reminder in January.

Use the application/renewal form on page 3 and don't forget to enclose a check for the appropriate amount.

By the way, if you joined for the first time after September 1, 2002, you don't have to renew, your membership is good until December 31, 2003.

Thanks and a Merry Christmas to you too!



Jackie Novkov at the Chestnut Ridge Meet

## Annual Meeting February 8th

Join us for the BFLO annual meeting on Saturday, February 8th at 6:30 PM. Once again we'll be at the White House on the campus of Medaille College. The meeting will feature planning for events in 2003, election (re-election?) of officers, reports on finances and mapping, announcements of one sort or another, and general socializing.

Food will follow the familiar format. The club supplies the pizza and fruit juice, members bring salads, veggies, munchies and desserts.

Kids are welcome but you might want to bring toys or activities to occupy them since no clowns or pony rides have been scheduled.

Medaille College is located in Buffalo at the intersection of Route 198 (Scajacquada Parkway) and Parkside Avenue. There is a chance that Medaille's conference center will move from the White House to another building, but we will know enough in advance to alert everyone.

*Continued on page 2*

## INSIDE THIS ISSUE

- 2** THOMASS Meet Announcement
- 3** Membership Application/Renewal Form
- 3** Mapping Update
- 4** Results, Sardinia Forest, 9/7/2002
- 4** Results, Camp Schoellkopf, 10/13/2002

---

# THOMASS Chase

*The THOMASS Chase is the Golden Horseshoe Orienteering Club's first winter orienteering event of the year.*

## EVENT DETAILS

DATE: DECEMBER 8, 2002  
MAP: WOODEND CONSERVATION AREA (NEW!)  
HOST: MARK ADAMS  
TIME: 10:00 am (mass start)

## COST & REGISTRATION

ADULT: \$10, JUNIOR \$5, FAMILY \$25  
GHO-GOLD PACKAGE: FREE

To pre-register email Mark Adams at  
adams.mark@sympatico.ca by December 5th.

Please pre-register at least 4 days before the race using e-mail to ensure a pre-marked map. Participants must be 2002 full or recreational members of an Ontario orienteering club or affiliated club. Cost includes pre-marked map, post race snacks, and of course a chance at Niagara Wine prize. Golden Horseshoe Orienteering Club package members are free.

## LOCATION

WOODEND CONSERVATION AREA, NIAGARA FALLS

## FORMAT

### EVENT FORMAT: THOMASS CHASE

Participants will begin with a score orienteering scramble. The length of this run will depend on a participant's AGE+GENDER 'handicap' using the famous 'THOMASS BOX ' rules (see below). After the scramble participants will run a 3 to 5km orienteering course (The Chase begins...) that will also be handicapped (same rules), meaning participants of all age/gender classes have an equal chance at winning. The score-O scramble and box handicapping system results in a chase to the finish line with high handicap point participants getting the early lead. The first to the finish line wins.

### THE THOMASS BOX

Each race will feature the famous "THOMASS BOX" which consists of a set of 6 checkpoints (labeled A, B, C, D, E, and F) somewhere on the course which participants may take in any order. Participants may

omit 1 of these 'BOX' checkpoints per 'handicap point'. 'Handicap' points are awarded as follows: females (2), -14 or 55+ (3), -16 or 45+ (2), -19 or 35+ (1).

## AWARDS

In Wine-O tradition a variety of famous Niagara wines will be available for the winners and as door prizes. A lucky finisher will also take home a bottle of ice-wine (after all it is a winter race!)

## THOMASS WINTER ORIENTEERING RULES

- 1) All events mass start at 10 am
- 2) Maximum time limit: 90 minutes!
- 3) All participants MUST carry a safety whistle.
- 4) Pre-marked maps are guaranteed to all pre-registrants.
- 5) Map cases are NOT provided. Please bring your own.
- 6) Event postponed 1 week if the temperature is below -20C.

## THE THOMASS SERIES

The THOMASS Series is held each winter season and is eagerly anticipated by die-hard and recreational orienteers alike. Consisting of 6 (or more) races held from November to March, The Series is low key and friendly yet challenging and exciting, and presents a welcome break for all of us unable to face a season without putting on the cleats and hitting the... snow. The top 24 finishers at each race receive points according to the following scale 25-24-23-22...2 pts. All remaining participants receive 1 participation point. The top 4 or 5 races count towards the series total. Awards will be presented to the overall top male, female and junior. The Team Trophy will once again be presented to the club with the most points.

So why not join us and this winter ... KICK SOME THOMASS!

## DIRECTIONS

Exit QEW at the RR-89/GLENDALE AVENUE exit (number 38A). Turn right (south) onto Glendale Avenue, continue south approx. 200m, then turn left onto Taylor Rd. Take Taylor up the Escarpment, at the top of the hill look for Woodend CA on the left. Follow the dirt road to the parking area.

### **Annual Meeting**, *continued from page 1.*

For planning purposes, it will be helpful to call and let us know you are coming. Call Dave at 837-3737.

Also, if there is a specific topic you'd like to put on the agenda, let us know that as well.

# Mapping Update

*Progress to report.*

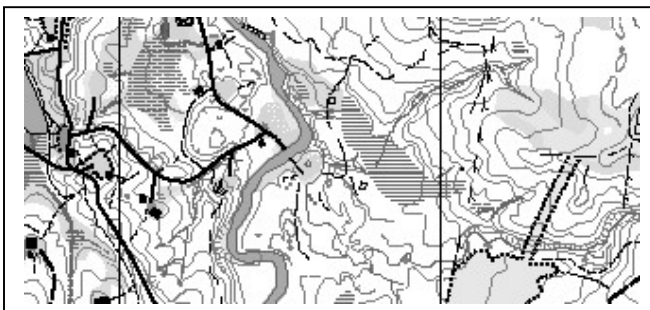
October saw the debut of the new edition of our map of Camp Schoellkopf (picture at right).

The next project in the works is a new map of Sprague Brook Park.

Aerial photos have been located. Unfortunately, they are at a scale of 1:40,000 – not optimum for an orienteering base map. It may mean extra time will need to be spent on the field-checking.

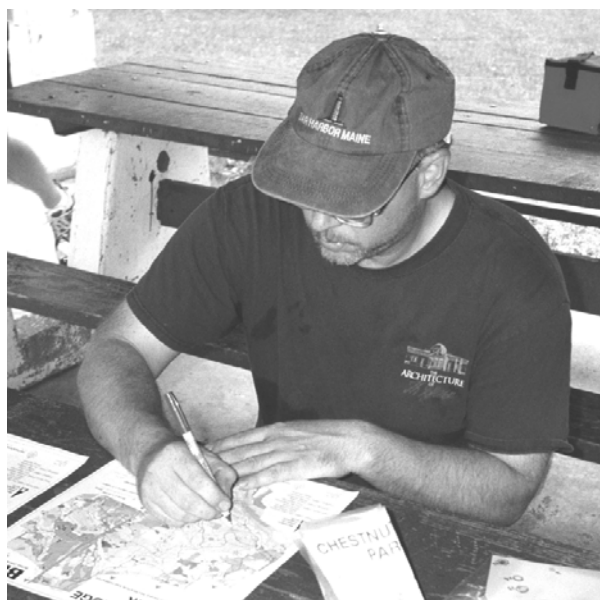
Three companies have expressed an interest in giving a quote to produce the base map from the photos. The next step is to provide them with enough details so that they can provide an accurate quote.

Hopefully, by the time of the Annual Meeting (see page 1) more information will be available and a plan can be put into place.



## Hold The Date

It may seem like a long way off, but on May 3 – 4, 2003 CNYO will be organizing the US Long-O and Short-O Championships at Mannsville, NY, 60 miles north of Syracuse. It will be an event worth attending.



Phil Wolfling – making map hike maps

## Buffalo Orienteering Club Contacts

President: Andy Grupp 741-2865  
Secretary: Phil Wolfling 832-9758  
Treasurer: Mike Gasiewicz 896-8597  
BFLOrienteer Editor: Dave Cady 837-3737

Publication dates for 2003: March 15, June 22, August 15, November 1. Unsolicited submissions are welcome. Please send articles two weeks before publication date. Email is preferred to [dcady@wned.org](mailto:dcady@wned.org). Otherwise mail to: 148 West Humboldt Parkway, Buffalo NY 14214.

### BUFFALO ORIENTEERING CLUB MEMBERSHIP APPLICATION / RENEWAL

Name \_\_\_\_\_

Date \_\_\_\_\_

Address \_\_\_\_\_

Phone \_\_\_\_\_

email \_\_\_\_\_

New Member

Family \$15

Renewal

Single \$10

For Family Memberships,  
Please list additional family members \_\_\_\_\_

Make check payable to Buffalo Orienteering Club  
And mail to Dave Cady, 148 West Humboldt Parkway, Buffalo, NY 14214.



Charlie Wightman at Chestnut Ridge

Unfortunately, no results are available for the meet at Chestnut Ridge Park on September 21, 2002. They will be printed in the next edition of the Newsletter. (Yet another reason to renew.)

## Results

### Sardinia Forest

September 7, 2002

Meet Director: Charlie Wightman

#### Red Course, 7 km

1	Gary Maslanka	87:20
2	David Levine	108:40
3	Greg Hyatt	110:50
4	Keith Weilacher	117:40
5	Rick Lavine	126:40
6	Tom Wightman	146:00
7	Dayle Lavine	154:00
8	Bob Bundy	155:00

#### Green Course, 5.1 km

1	Andy Grupp	86:20
2	Ed Lanthier	114:40
	Al Booth	DNF
	Phil Payne	DNF
	C&K Hainberger	DNF

#### Orange Course, 3 km

1	Jim Hatem	55:15
2	Rebecca Wightman	58:40
3	Angers, Dan/Laura	90:20
4	B & D Maul	103:00
	Matt & Marcia Binda	DNF
	Costanzo/Airey	DNF

#### White Course, 2 km

1	Kachelmeyer Family	65:00
2	Maslanka/Lugo Family	65:30
3	Levine/Payne Group	85:35
	Pam LaDue & Kids	DNF

### Camp Schoellkopf

October 13, 2002

Meet Director: Jon Sundquist

#### Advanced, 5.7 km, 14 controls

1	Greg Hyatt	107:40
2	Chris Nichol	156:30
3	Davis & Lakomy	169:00
4	Patricia Lyons	DNF

#### Medium, 3.4 km, 9 controls

1	Jackie Novkov	76:00
2	Tom Wightman	82:00
3	Mark & Luke Wolfing	96:30
4	Linc Blaisdell	103:30
5	Al Booth	110:50
6	Maslanka Family	118:15
7	Wightman/Geer	118:20

#### Short, 2.7 km, 10 controls

1	Rebecca Wightman	40:45
2	Wolfing/Bald Family	48:00
3	Rave Family	50:20
4	Fred Gordon	56:20

### BFL Orienteer

c/o David Cady

148 West Humboldt Parkway

Buffalo, NY 14214